



OKANAGAN 1
VERNON

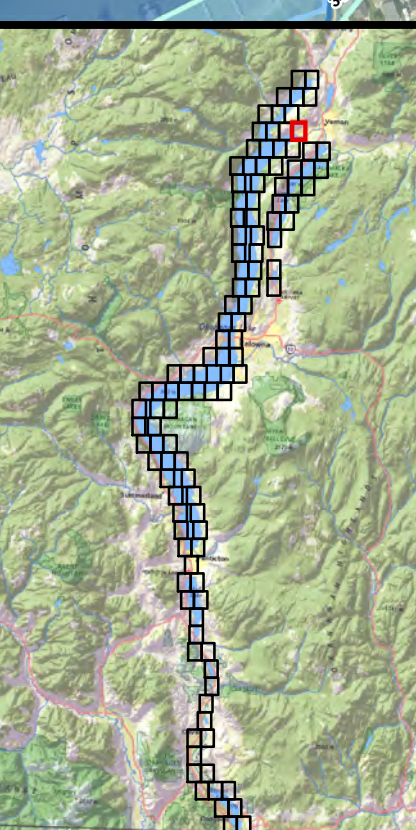
PRIEST'S VALLEY 6

Okanagan Lake

Vernon Creek



nhc
northwest hydraulic consultants
30 Gostick Place
North Vancouver, B.C. V7M 3G3
Canada
Office: 604.980.6011
Fax: 604.980.9264
www.nhcweb.com



SHEET 3	SHEET 4	SHEET 5
SHEET 7	SHEET 8	
SHEET 11	SHEET 12	
SHEET 15	SHEET 16	SHEET 102
SHEET 104	SHEET 105	SHEET 106

- ➡ FLOW DIRECTION
- SPOT ELEVATION
labelled with elevation in metres (CGVD2013)
- MINOR CONTOUR AT 1 M INTERVAL
- MAJOR CONTOUR AT 5 M OR 20 M INTERVAL
labelled with elevation in metres (CGVD2013)
- - - DIKE
- RAILWAY LINE
- FIRST NATION RESERVE BOUNDARY
- MUNICIPAL BOUNDARY
- REGIONAL DISTRICT BOUNDARY
- STUDY LIMIT

- INUNDATION EXTENT - DESIGN WITH FREEBOARD (FCL)
 - INUNDATION EXTENT - DESIGN WITHOUT FREEBOARD
 - 123.4 FLOOD CONSTRUCTION LEVEL (FCL) RIVER ISOLINE
(123.1) Rivers - labelled with FCL in metres CGVD2013 (FCL in CGVD28)
 - 123.4 FLOOD CONSTRUCTION LEVEL (FCL) LAKE ZONE
(123.4) Lake - labelled with FCL in metres CGVD2013 (FCL in CGVD28)
 - 123.4 FLOOD CONSTRUCTION LEVEL (FCL) SHORELINE ZONE
(123.4) Lake - labelled with FCL in metres CGVD2013 (FCL in CGVD28)
- DESIGN FLOOD
- OKANAGAN RIVER REACHES: 200-YEAR MID-CENTURY^a
 - OKANAGAN LAKE: 2017 MID-CENTURY^b
 - WOOD AND KALAMAILKA LAKES: 2017 MID-CENTURY^b
 - ELLISON LAKE: 200-YEAR MID-CENTURY
 - SKAHA LAKE: 200-YEAR MID-CENTURY
 - VASELUX LAKE: 200-YEAR MID-CENTURY
 - OSOYOOS LAKE: 200-YEAR MID-CENTURY
 - FREEBOARD = 0.6 METRES
- Footnote:
- ^a "Mid-century" refers to an increase for climate change, projected to occur in 2055.
 - ^b The 2017 flood is the flood-of-record at Okanagan, Wood, and Kalamailka lakes, and is used as the design flood at these locations because it is larger than a 200-year event.

REFER TO NOTES ON INDEX MAP

**OKANAGAN MAINSTEM
FLOOD MAPPING
FLOODPLAIN MAPS**

SHEET 12 OF 116

SCALE - 1:5,000

0 100 200 300 M

Coordinate System: NAD 1983 CSRS UTM ZONE 11N
Units: METRES; Vertical Datum: CGVD2013
FCL values in both CGVD2013 and CGVD28 HTV2.0

Engineer VCCB	GIS MSN/MAO/SWM	Reviewer DPM (rivers)/GFL (lakes)/PKK
Job Number 3004430 & 3006034	Date 30-APR-2020	rev. 29-JAN-2021