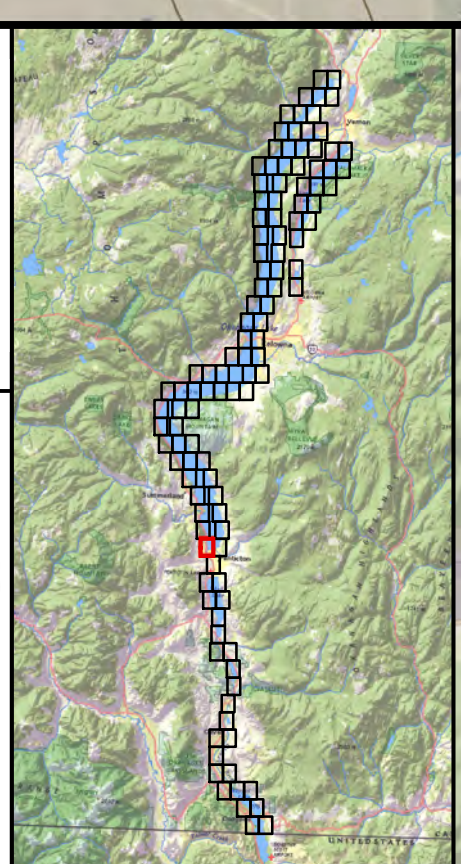



**nhc**  
northwest hydraulic consultants  
30 Gostick Place  
North Vancouver, B.C. V7M 3G3  
Canada  
Office: 604.980.6011  
Fax: 604.980.9264  
www.nhweb.com



SHEET 71	SHEET 72
SHEET 73	SHEET 74
<b>SHEET 75</b>	SHEET 76
SHEET 77	SHEET 78
SHEET 78	SHEET 79

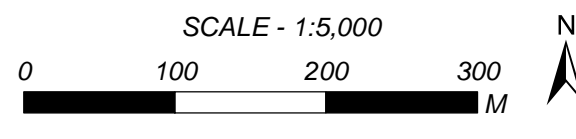
- ➡ FLOW DIRECTION
  - SPOT ELEVATION  
labelled with elevation in metres (CGVD2013)
  - MINOR CONTOUR AT 1 M INTERVAL
  - MAJOR CONTOUR AT 5 M OR 20 M INTERVAL  
labelled with elevation in metres (CGVD2013)
  - - - DIKE
  - RAILWAY LINE
  - FIRST NATION RESERVE BOUNDARY
  - MUNICIPAL BOUNDARY
  - REGIONAL DISTRICT BOUNDARY
  - STUDY LIMIT
- REFER TO NOTES ON INDEX MAP

- INUNDATION EXTENT - DESIGN WITH FREEBOARD (FCL)
  - INUNDATION EXTENT - DESIGN WITHOUT FREEBOARD
  - 123.4 (123.1) FLOOD CONSTRUCTION LEVEL (FCL) RIVER ISOLINE  
Rivers - labelled with FCL in metres CGVD2013 (FCL in CGVD28)
  - 123.4 (123.4) FLOOD CONSTRUCTION LEVEL (FCL) LAKE ZONE  
Lake - labelled with FCL in metres CGVD2013 (FCL in CGVD28)
  - 123.4 (123.4) FLOOD CONSTRUCTION LEVEL (FCL) SHORELINE ZONE  
Lake - labelled with FCL in metres CGVD2013 (FCL in CGVD28)
- DESIGN FLOOD
- OKANAGAN RIVER REACHES: 200-YEAR MID-CENTURY<sup>a</sup>
  - OKANAGAN LAKE: 2017 MID-CENTURY<sup>b</sup>
  - WOOD AND KALAMAILKA LAKES: 2017 MID-CENTURY<sup>b</sup>
  - ELLISON LAKE: 200-YEAR MID-CENTURY
  - SKAHA LAKE: 200-YEAR MID-CENTURY
  - VASELUX LAKE: 200-YEAR MID-CENTURY
  - OSOYOOS LAKE: 200-YEAR MID-CENTURY
  - FREEBOARD = 0.6 METRES
- Footnote:  
<sup>a</sup> "Mid-century" refers to an increase for climate change, projected to occur in 2055.  
<sup>b</sup> The 2017 flood is the flood-of-record at Okanagan, Wood, and Kalamailka lakes, and is used as the design flood at these locations because it is larger than a 200-year event.

**OKANAGAN MAINSTEM FLOOD MAPPING FLOODPLAIN MAPS**

SHEET 75 OF 116

SCALE - 1:5,000



Coordinate System: NAD 1983 CSRS UTM ZONE 11N  
Units: METRES; Vertical Datum: CGVD2013  
FCL values in both CGVD2013 and CGVD28 HTV2.0

Engineer VCCB	GIS MSN/MAO/SWM	Reviewer DPM (rivers)/GFL (lakes)/PKK
Job Number 3004430 & 3006034	Date 30-APR-2020	rev. 29-JAN-2021