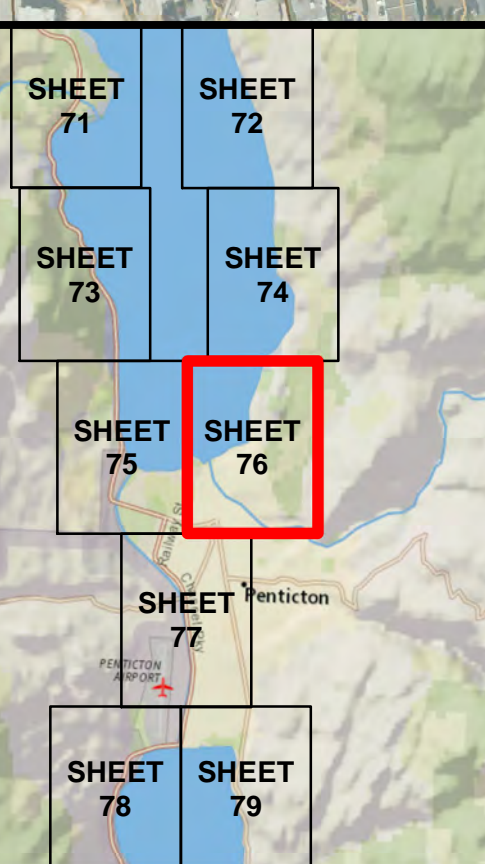
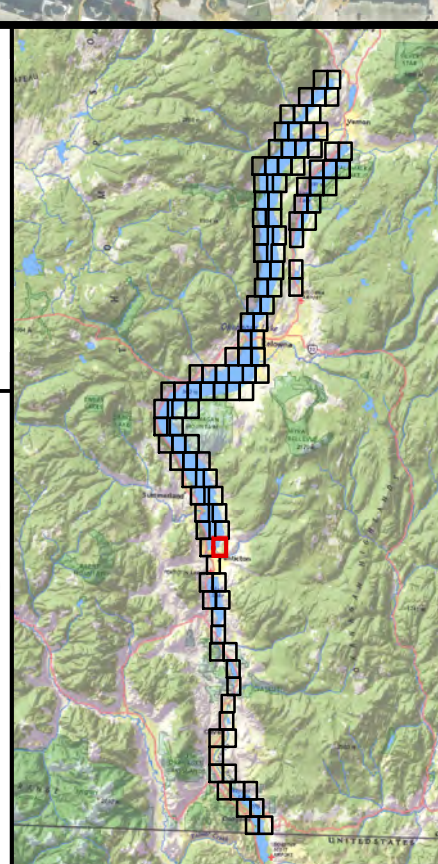


nhc
northwest hydraulic consultants
30 Gostick Place
North Vancouver, B.C. V7M 3G3
Canada
Office: 604.980.6011
Fax: 604.980.9264
www.nhcweb.com



→ FLOW DIRECTION
 • SPOT ELEVATION
labelled with elevation in metres (CGVD2013)
 — MINOR CONTOUR AT 1 M INTERVAL
 — MAJOR CONTOUR AT 5 M OR 20 M INTERVAL
labelled with elevation in metres (CGVD2013)
 - - - DIKE
 — RAILWAY LINE
 [Pink dashed line] FIRST NATION RESERVE BOUNDARY
 [Black dashed line] MUNICIPAL BOUNDARY
 [Blue dashed line] REGIONAL DISTRICT BOUNDARY
 [Purple dashed line] STUDY LIMIT
 REFER TO NOTES ON INDEX MAP

[Light blue box] INUNDATION EXTENT - DESIGN WITH FREEBOARD (FCL)
 [Dark blue box] INUNDATION EXTENT - DESIGN WITHOUT FREEBOARD
 123.4 FLOOD CONSTRUCTION LEVEL (FCL) RIVER ISOLINE
Rivers - labelled with FCL in metres CGVD2013 (FCL in CGVD28)
 123.4 FLOOD CONSTRUCTION LEVEL (FCL) LAKE ZONE
Lake - labelled with FCL in metres CGVD2013 (FCL in CGVD28)
 123.4 FLOOD CONSTRUCTION LEVEL (FCL) SHORELINE ZONE
Lake - labelled with FCL in metres CGVD2013 (FCL in CGVD28)
 DESIGN FLOOD
 - OKANAGAN RIVER REACHES: 200-YEAR MID-CENTURY^a
 - OKANAGAN LAKE: 2017 MID-CENTURY^b
 - WOOD AND KALAMAILKA LAKES: 2017 MID-CENTURY^b
 - ELLISON LAKE: 200-YEAR MID-CENTURY
 - SKAHA LAKE: 200-YEAR MID-CENTURY
 - VASELUX LAKE: 200-YEAR MID-CENTURY
 - OSOYOOS LAKE: 200-YEAR MID-CENTURY
 FREEBOARD = 0.6 METRES
 Footnote:
^a "Mid-century" refers to an increase for climate change, projected to occur in 2055.
^b The 2017 flood is the flood-of-record at Okanagan, Wood, and Kalamailka lakes, and is used as the design flood at these locations because it is larger than a 200-year event.

OKANAGAN MAINSTEM FLOOD MAPPING FLOODPLAIN MAPS

SHEET 76 OF 116

SCALE - 1:5,000

0 100 200 300 M

Coordinate System: NAD 1983 CSRS UTM ZONE 11N
 Units: METRES; Vertical Datum: CGVD2013
 FCL values in both CGVD2013 and CGVD28 HTV2.0

Engineer VCCB	GIS MSNMAO/SWM	Reviewer DPM (rivers)/GFL (lakes)/PKK
Job Number 3004430 & 3006034	Date 30-APR-2020	rev. 29-JAN-2021