

# Oceola Fish and Game Club



## Summary of Club Activities

Presentation to OBWB Stewardship Council, April 9, 2009

OFGC has operated a Kokanee incubator since the early 1980s.



Glen Bowman and Gary Kozub collecting Kokanee eggs for the incubator.

9 April 2009

Oceola Fish and Game Club

2



2002

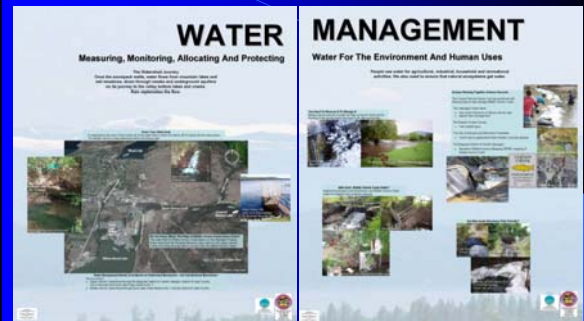
Stream restoration projects completed on Middle Vernon Creek



2008

9 April 2009

## Education and Awareness



Panels from Kiosk, Swalwell Park, District of Lake County (2008).

9 April 2009

Oceola Fish and Game Club

4

## Riparian Zone Classification

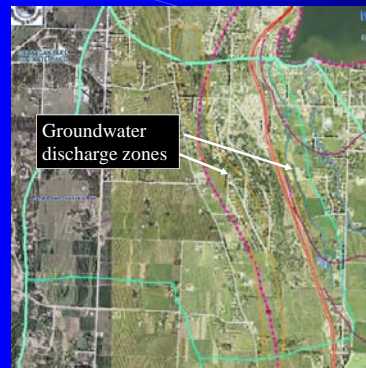


The OFGC wants to set performance targets, increase the amount of riparian vegetation by so much over the next 5 years.

9 April 2009

Oceola Fish and Game Club

5



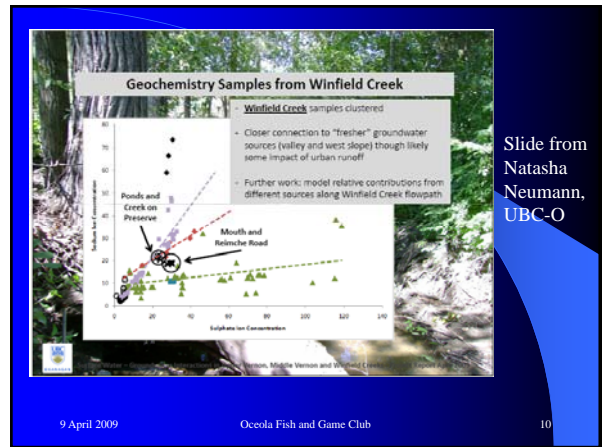
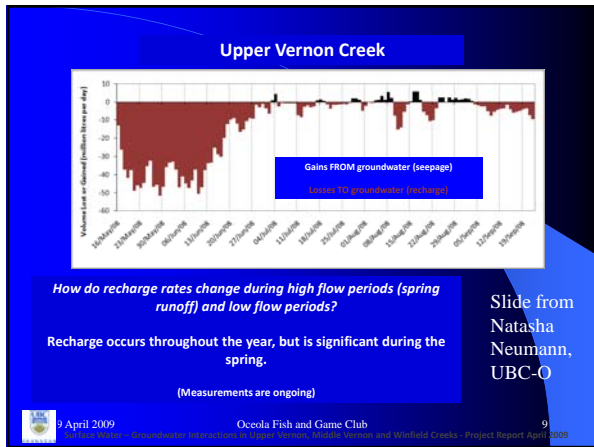
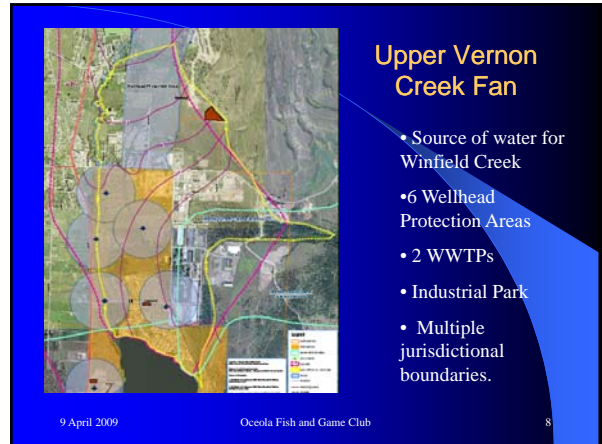
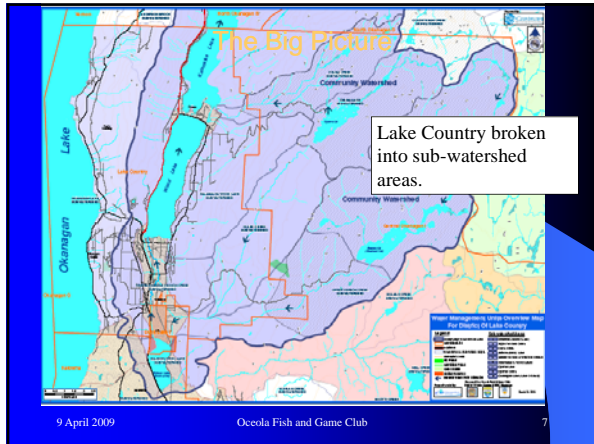
## Winfield Creek Watershed

Development has reduced the quantity of water in the headwaters of this groundwater fed stream. Has resulted in partnership with UBC-O.

9 April 2009

Oceola Fish and Game Club

6



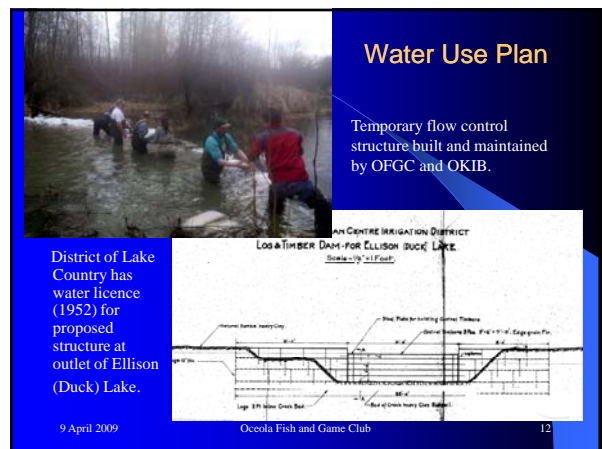
Slide from Natasha Neumann, UBC-O

### General Conclusions

- Surface water and groundwater is highly connected in the Winfield area
- Groundwater is primarily recharged by Upper Vernon Creek during high spring flows
- Middle Vernon Creek generally loses water along its length but gains water from springs and spring-fed creeks
- Winfield Creek relies solely on groundwater for flow
- Urban runoff contributes to flow in MVC and Winfield Creek
- LeBreton's 1974 definition of aquifer layers may not apply to the southern portion of the valley where well chemistry does not indicate separate and unique groundwater systems

Slide from Natasha Neumann, UBC-O

9 April 2009      Ocoola Fish and Game Club      11



## Concluding Remarks

- A water use plan is needed that looks at both surface water and groundwater.
- Need to quantify how much groundwater can be extracted without impacting on ecosystem functions – maintaining groundwater flow to Winfield Creek.